



System <ul style="list-style-type: none"> CPU: Bach SoC Flash: 8MB RAM: 64MB+32MB Embedded OS: Linux 2.6 	Alarm and Event Management <ul style="list-style-type: none"> Triple-window video motion detection Tamper detection One D/I and one D/O for external sensor and alarm Event notification using HTTP, SMTP or FTP Local recording of MP4 file
Lens <ul style="list-style-type: none"> Board lens, vari-focal, f = 3.3 ~ 12 mm, F1.4 (wide), F2.9 (tele), focus range: 50 cm to infinity (FD7141) Board lens, vari-focal, f = 9 ~ 22 mm, F1.4 (wide), F1.6 (tele), focus range: 100 cm to infinity (FD7141V) Removable IR-cut filter for day & night function 	On-board Storage <ul style="list-style-type: none"> SD/SDHC card slot Stores snapshots and video clips <small>*Note: No SD/SDHC card slot & local storage function for Argentina.</small>
Angle of View <ul style="list-style-type: none"> 23.9° ~ 89.8° (horizontal) (FD7141) 13.1° ~ 32.1° (horizontal) (FD7141V) 17.9° ~ 63.6° (vertical) (FD7141) 9.8° ~ 23.3° (vertical) (FD7141V) 	Security <ul style="list-style-type: none"> Multi-level user access with password protection IP address filtering HTTPS encrypted data transmission
Shutter Time <ul style="list-style-type: none"> 1/5 sec. to 1/15,000 sec. 	Users <ul style="list-style-type: none"> Live viewing for up to 10 clients
Image Sensor <ul style="list-style-type: none"> 1/3.3" Wide Dynamic Range CMOS sensor in 720x480 resolution 	Dimension <ul style="list-style-type: none"> Ø 170 mm x 133 mm
Minimum Illumination <ul style="list-style-type: none"> 0.5 Lux / F1.4 (FD7141) 0.4 Lux / F1.4 (FD7141V) 0 Lux / F1.4 (IR LED on) 	Weight <ul style="list-style-type: none"> Net: 2,164 g
IR Illuminators <ul style="list-style-type: none"> Built-in IR illuminators, effective up to 15 meters 	LED Indicator <ul style="list-style-type: none"> System restore status indicator
Video <ul style="list-style-type: none"> Compression: MJPEG & MPEG-4 Streaming: <ul style="list-style-type: none"> Simultaneous dual streams MPEG-4 streaming over UDP, TCP, HTTP or HTTPS MPEG-4 multicast streaming MJPEG streaming over HTTP or HTTPS Supports 3GPP mobile surveillance Frame rates: <ul style="list-style-type: none"> MPEG-4: Up to 30/25 fps at 720x480 Up to 30/25 fps at 360x240 MJPEG: Up to 30/25 fps at 720x480 	Power <ul style="list-style-type: none"> 12V DC 24V AC Power consumption: Max. 7.5 W Max. 10 W (with heater) 802.3af compliant Power-over-Ethernet
Image Settings <ul style="list-style-type: none"> Adjustable image size, quality and bit rate Time stamp and text caption overlay Flip & mirror Configurable brightness, contrast, saturation, sharpness, white balance and exposure AGC, AWB, AES WDR (Wide Dynamic Range) Automatic, manual or scheduled day/night mode Supports privacy masks 	Housing <ul style="list-style-type: none"> Metal base and polycarbonate transparent cover Vandal-proof: 1,000 kg Weather-proof IP66-rated housing
Audio <ul style="list-style-type: none"> Compression: <ul style="list-style-type: none"> GSM-AMR speech encoding, bit rate: 4.75 kbps to 12.2 kbps MPEG-4 AAC audio encoding, bit rate: 16 kbps to 128 kbps Interface: <ul style="list-style-type: none"> External microphone input Audio output Supports two-way audio via SIP protocol Supports audio mute 	Approvals <ul style="list-style-type: none"> CE, LVD, FCC, VCCI, C-Tick
Networking <ul style="list-style-type: none"> 10/100 Mbps Ethernet, RJ-45 Protocols: IPv4, TCP/IP, HTTP, HTTPS, UPnP, RTSP/RTP/RTCP, IGMP, SMTP, FTP, DHCP, NTP, DNS, DDNS and PPPoE 	Operating Environments <ul style="list-style-type: none"> Temperature: -20 ~ 60 °C (-4 ~ 140 °F) Humidity: 20% ~ 95% RH
	Viewing System Requirements <ul style="list-style-type: none"> OS: Microsoft Windows 2000/XP/Vista Browser: Mozilla Firefox, Internet Explorer 6.x or above Cell phone: 3GPP player Real Player 10.5 or above Quick Time 6.5 or above
	Installation, Management, and Maintenance <ul style="list-style-type: none"> 3-axis mechanism for flexible ceiling and wall mount installation Drop-ceiling mount installation Installation Wizard 2 32-CH recording software Supports firmware upgrade
	Applications <ul style="list-style-type: none"> SDK available for application development and system integration
	Warranty <ul style="list-style-type: none"> 24 months

All specifications are subject to change without notice. Copyright © 2011 VIVOTEK INC. All rights reserved.

Fixed Dome Network Camera

FD7141

Outdoor · WDR · Vandal-proof



VIVOTEK FD7141 is a professional-grade vandal and weather-proof fixed dome network camera integrating the latest features required for outdoor surveillance into a discreet, compact package. The FD7141's IP66 rating ensures protection from water and dust and its vandal-proof design provides additional protection in high risk environments. With the built-in heater and fan, the FD7141 can also operate in an extended temperature range required by many of today's demanding installations.

Boasting a Wide Dynamic Range CMOS sensor, the FD7141 can cope with challenging lighting conditions and provide image quality superior to other products in its class. The camera delivers true day and night functionality with a removable IR-cut filter and built-in IR illuminators. Installation is also suited for both wall and ceiling with the unique 3-axis rotation design.

The FD7141 supports tamper detection, which detects video loss from events such as blockage or spray-painting. Also incorporated are advanced features including simultaneous dual streams, 802.3af compliant PoE, two-way audio via SIP protocol, built-in SD/SDHC card slot*, drop-ceiling mount, and HTTPS encrypted data transmission for a robust outdoor security solution.

* No SD/SDHC card slot & local storage function for Argentina.

The Complete Smart Surveillance Solution

Adapted for High-contrast Lighting Conditions

The FD7141 offers WDR (Wide Dynamic Range) functionality that delivers identifiable images in high-contrast environments such as backlight, glare, and light reflection. By capturing and combining information from the darkest and brightest areas, the FD7141 generates images that accurately reproduce fine details that appear in the actual scene.



WDR

Regular

Rugged Design for High Risk Areas

Equipped with a protective housing, the FD7141 provides protection against vandalism, making it suitable for high-risk environments. The metal base and polycarbonate cover enable the FD7141 to withstand an impact of up to 1,000 kg and tamper proof screws are provided to prevent dismantling.



Vandal-proof housing

Maximum Protection against Natural Threats

The FD7141's weather-proof IP66-rated housing provides protection from extreme weather conditions, dust, and moisture.



Weather-proof

Clear Images 24/7

The FD7141 delivers true day & night functionality with a built-in removable IR-cut filter and IR illuminators. By day, the IR-cut filter screens out infrared light to reduce color distortion, and at night, the filter is removed and the IR illuminators are activated to enhance light sensitivity.

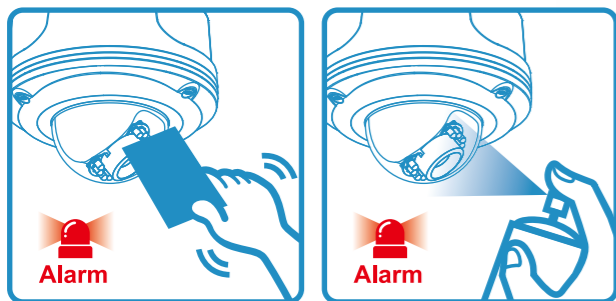


Day

Night

Intelligent Tamper Detection

Tamper detection prevents the interruption of monitoring and recording due to camera tampering events such as blockage and spray-painting. By detecting scene changes caused by camera tampering, the FD7141 is an invaluable solution for vandalism-prone areas such as train stations or prisons.



Blockage

Spray-painting

SD/SDHC Card

The FD7141 features an SD/SDHC card slot to provide short term and portable video storage on compatible memory cards.



Heater & Fan, Supported by PoE

With a heater and fan incorporated in the housing, the FD7141 can operate in extreme temperatures ranging from -20 to 60 ° C and humidity from 20 to 95% RH.



Flexible Installation



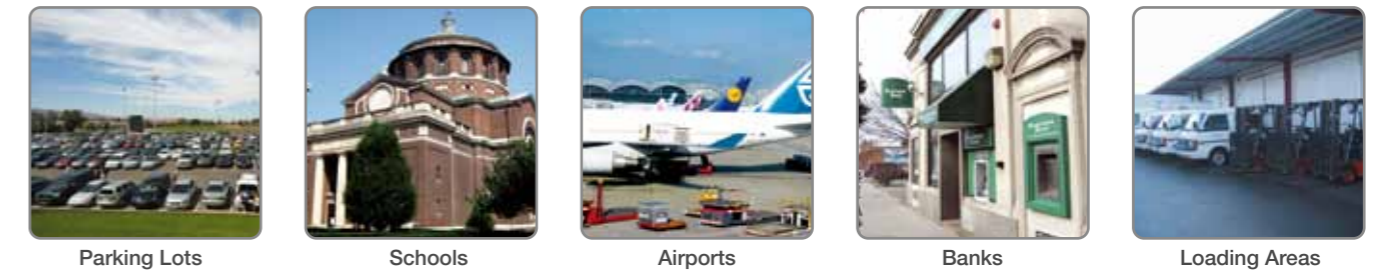
Ceiling Mount

Drop-Ceiling Mount

Pendant Mount

Corner Mount

Versatile Applications



Parking Lots

Schools

Airports

Banks

Loading Areas

Product Features

- Wide Dynamic Range CMOS Sensor
- 3.3 ~ 12 mm Vari-focal Lens (FD7141)
- 9 ~ 22 mm Vari-focal Lens (FD7141V)
- Removable IR-cut Filter for Day and Night Function
- Built-in IR Illuminators, effective up to 15 Meters
- Real-time MPEG-4 and MJPEG Compression (Dual codec)
- Simultaneous Dual Streams
- 3-axis Mechanical Design for Ceiling and Wall Mount Installation
- Vandal-proof and Weather-proof IP66-rated Housing
- Tamper Detection for Unauthorized Changes
- Built-in 802.3af Compliant PoE
- Two-way Audio via SIP Protocol
- Built-in SD/SDHC Card Slot for On-board Storage*
- Built-in Heater and Fan, supported by PoE

* No SD/SDHC card slot & local storage function for Argentina.

